



SHARK FACTS

SHARKS4KIDS.COM

ATLANTIC MOBULA RAY

ATLANTIC MOBULA RAY (Mobula hypostoma)

- ▶ The Atlantic devil ray gets its name from its distinctive "horns" formed by the forward facing cephalic fins. They are also called the lesser devil ray
- ▶ The species are found along the coasts of the western Atlantic, from North Carolina to northern Argentina, including the Gulf of Mexico
- ▶ They are relatively small, growing to only about 48 inches wide
- ▶ They are known to swim at very high speeds and leap out of the water, often a great distance

The "horns" of the Atlantic mobula ray can unfurl and be used to **FUNNEL FOOD** like shrimp towards their mouths

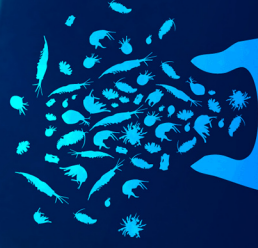


Image: Andy Murch