



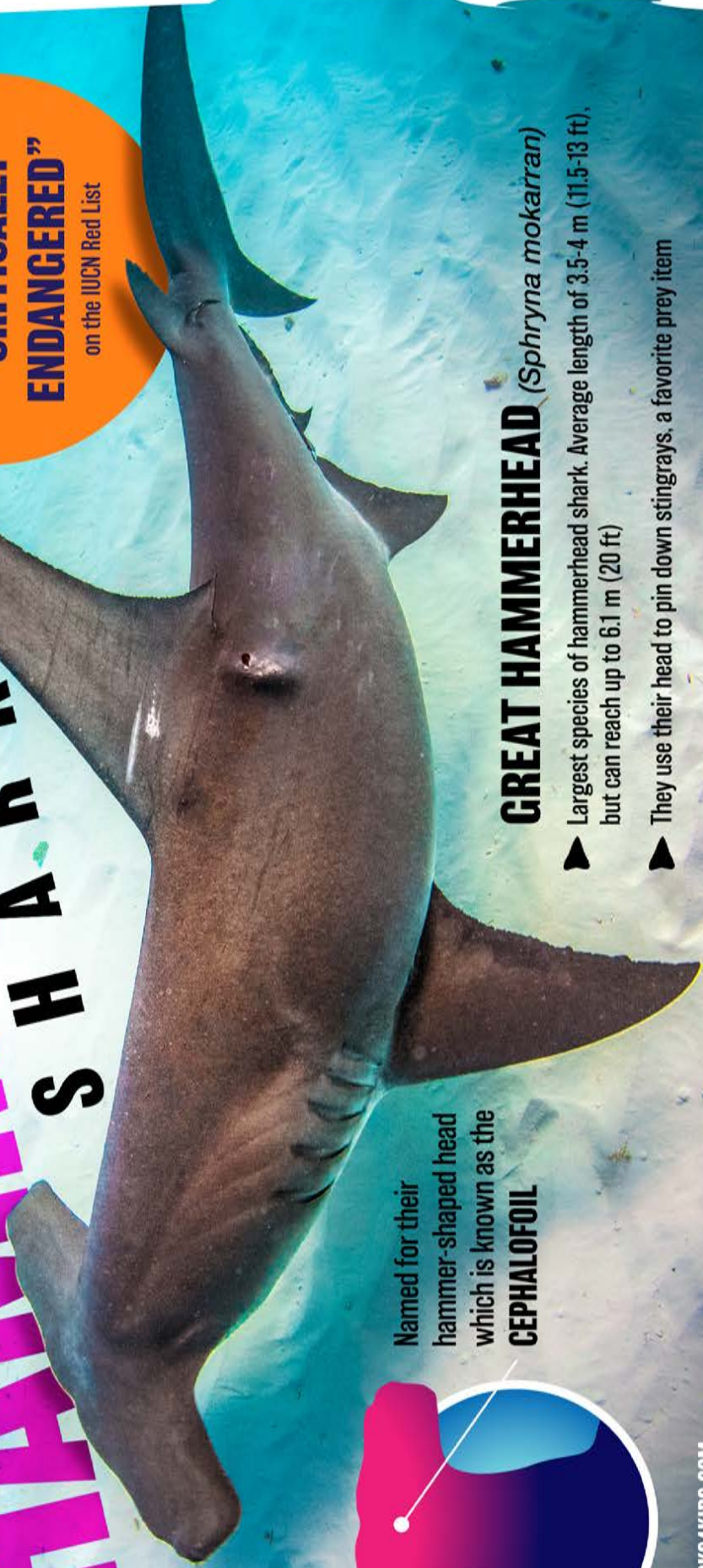
**SHARK FACTS**



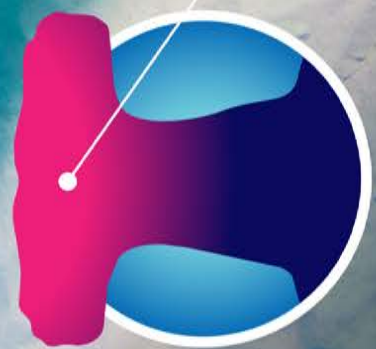
Their dorsal fin is longer than their pectoral fins, so swimming sideways increases their "wingspan." This allows them to swim more efficiently (saves energy)

# GREAT HAMMERHEAD SHARK

**CONSERVATION STATUS**  
The great hammerhead shark is classified as **"CRITICALLY ENDANGERED"** on the IUCN Red List



Named for their hammer-shaped head which is known as the **CEPHALOFIOL**



- GREAT HAMMERHEAD** (*Sphryna mokarran*)
- ▶ Largest species of hammerhead shark. Average length of 3.5-4 m (11.5-13 ft), but can reach up to 6.1 m (20 ft)
  - ▶ They use their head to pin down stingrays, a favorite prey item